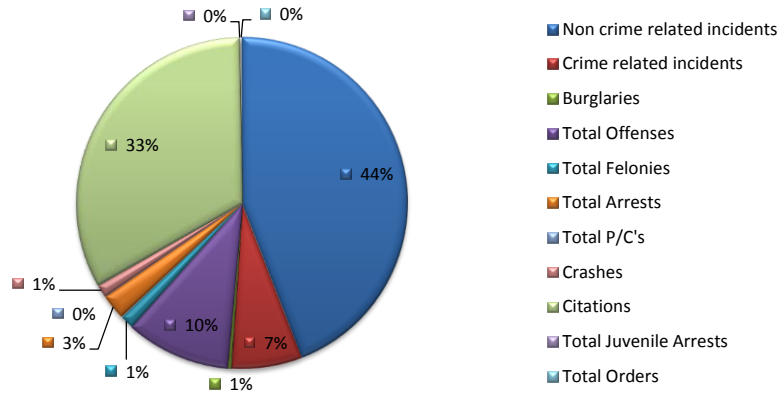


Year	2005	2006	2007	2008	2009	2010	2011	2012	2013 (Jan-May)	2013 (estimate)
Non crime related incidents	2953	2559	3033	2675	2415	2197	2310	2308	952	2285
Crime related incidents						343	328	333	113	271
Burglaries	9	7	13	7	15	20	19	12	4	10
Total Offenses						508	485	487	170	408
Total Felonies	55	32	43	45	48	66	68	50	26	62
Total Arrests	148	143	175	141	134	123	95	114	52	125
Total P/C's			46	16	16	4	2	4	7	17
Crashes	64	85	64	61	64	63	61	69	20	48
Citations			1846	2413	1758	1639	1829	2534	664	1594
Total Juvenile Arrests			23	9	12	9	3	2	2	5
Total Orders			17	10	12	6	3	10	1	2
All Activities	3229	2826	5260	5377	4474	4978	5203	5923	2011	4826
All Activities (-) Citations	3229	2826	3414	2964	2716	3339	3374	3389	1347	3233

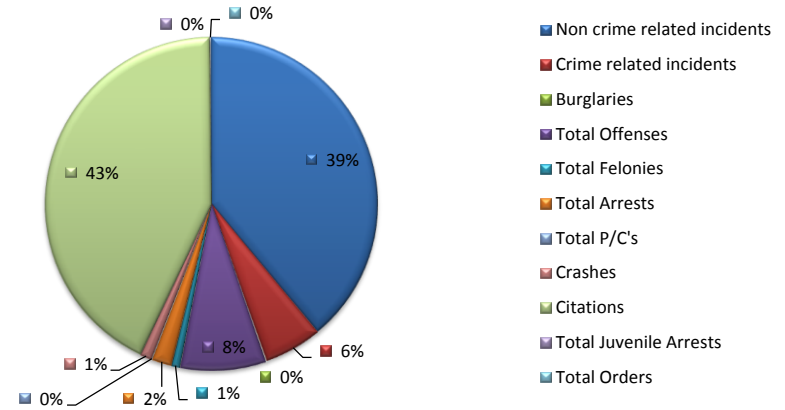
Full Time Officers	6	7	7	7	7	7	7	7	7	7
Part Time Officers	3	2	2	1	1	3	3	3	3	3
Total Officers	9	9	9	8	8	10	10	10	10	10

FTO per Activity	538	404	751	768	639	711	743	846	287	689
PTO per Activity	1076	1413	2630	5377	4474	1659	1734	1974	670	1609
TO per Activity	359	314	584	672	559	498	520	592	201	483

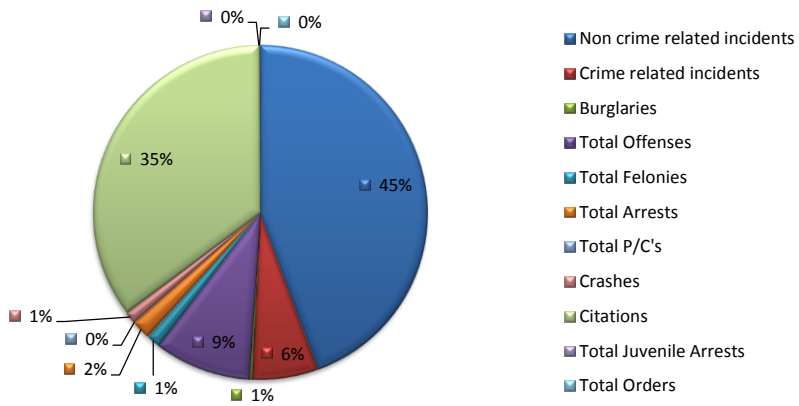
2010 Activity



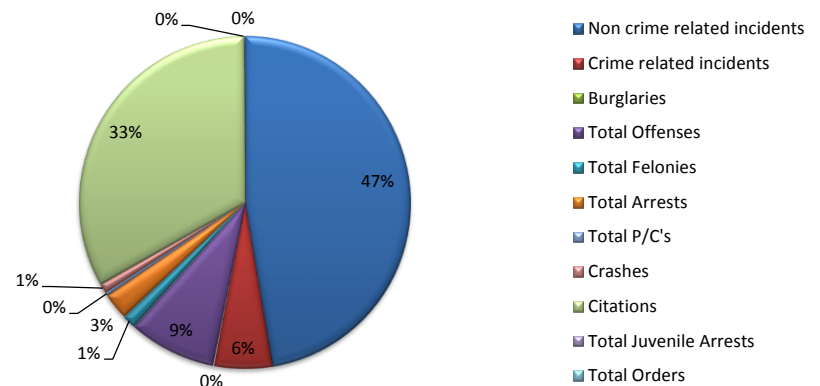
2012 Activity



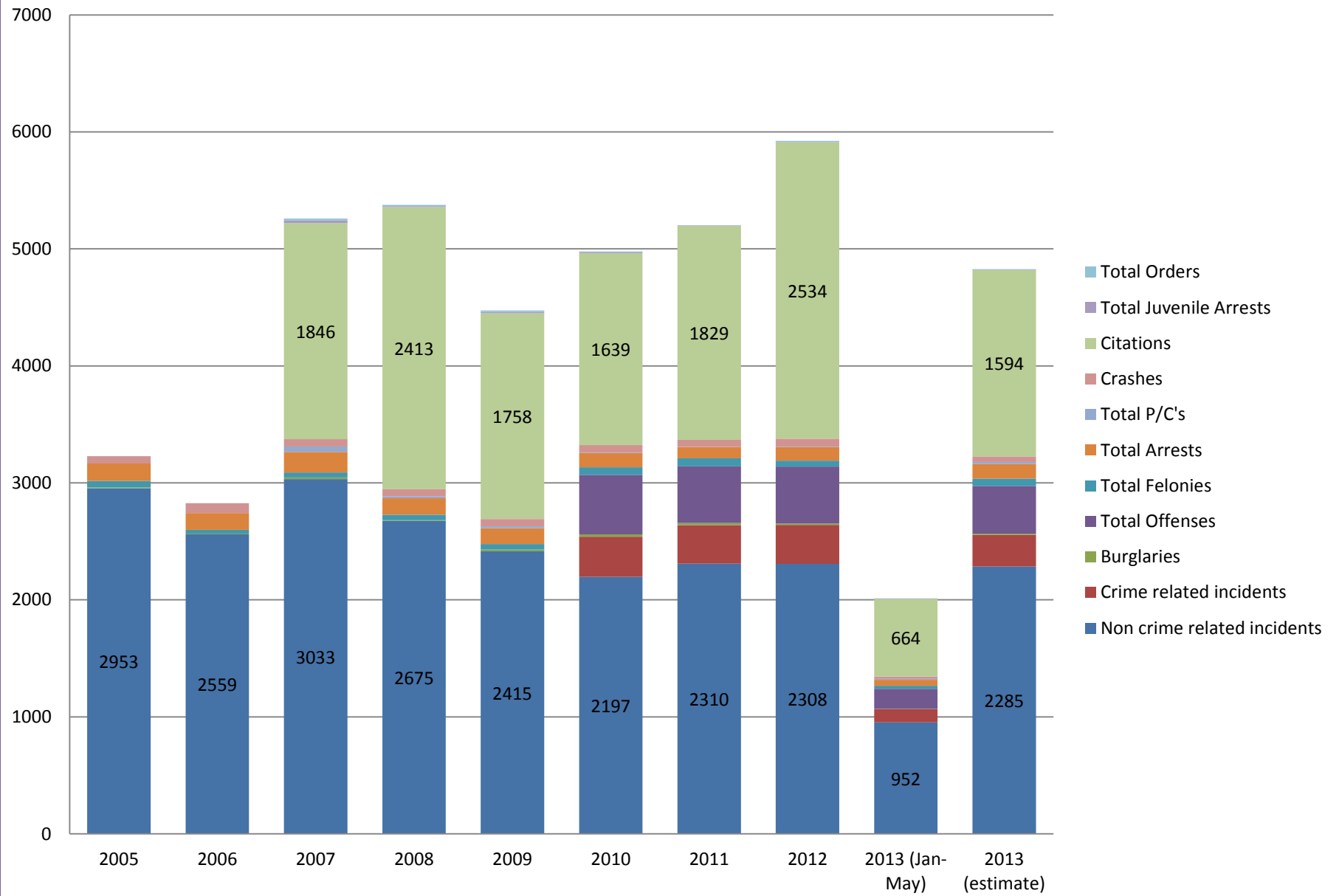
2011 Activity

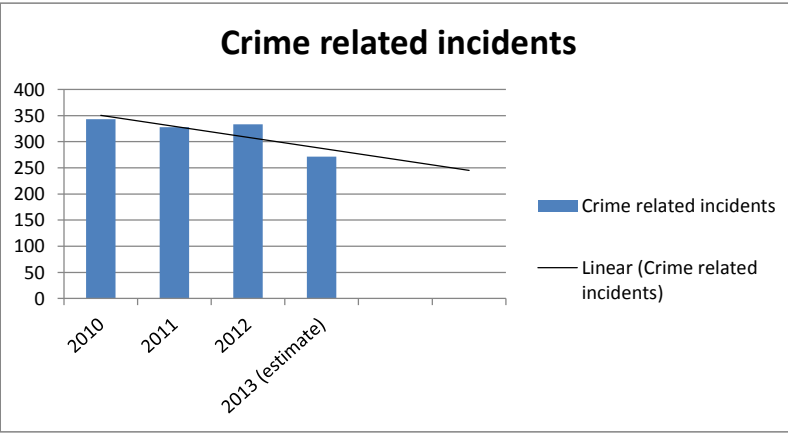
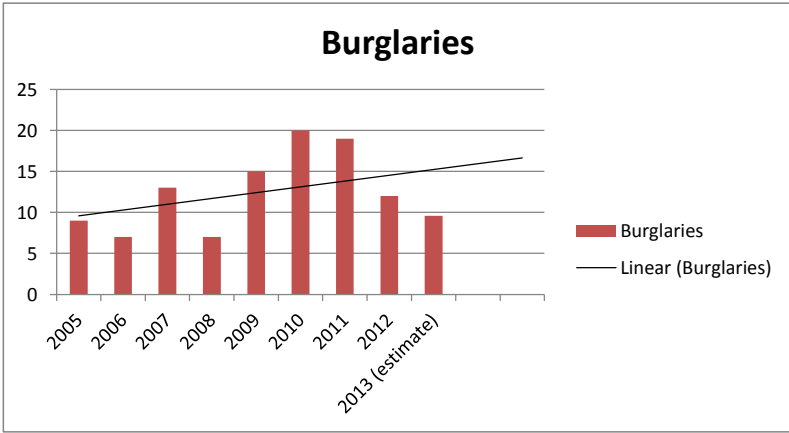
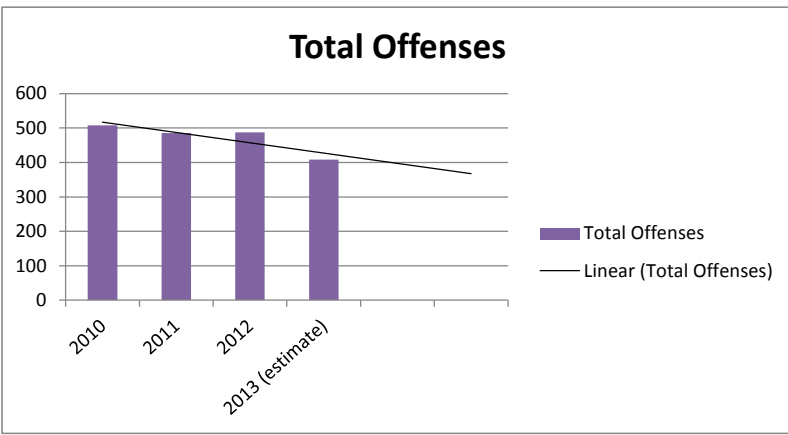
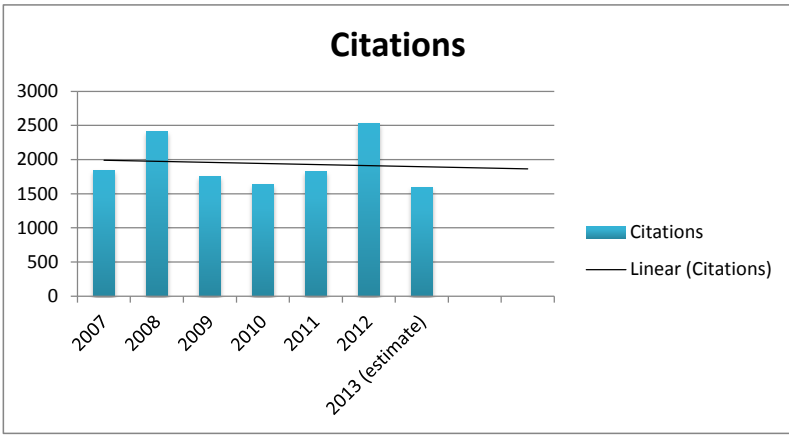
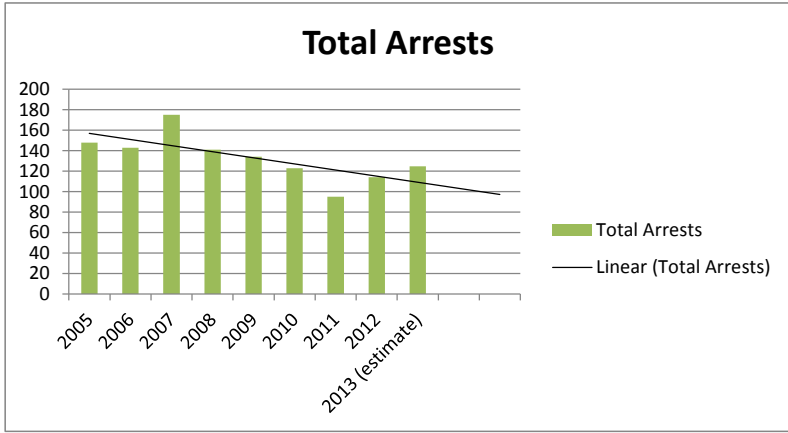
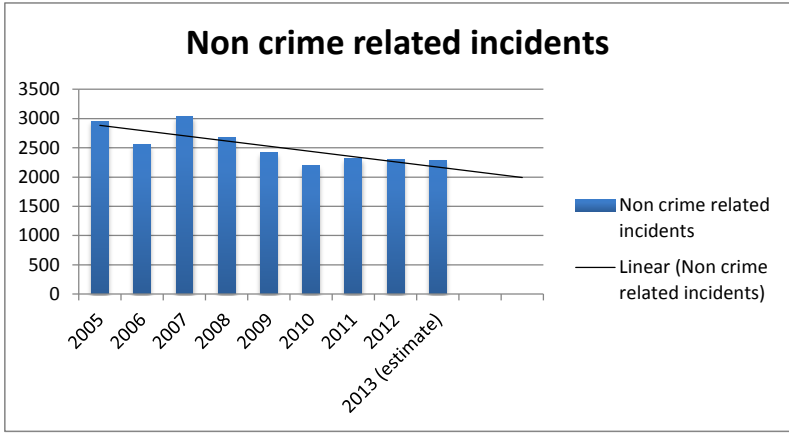


2013 Activity Jan - May

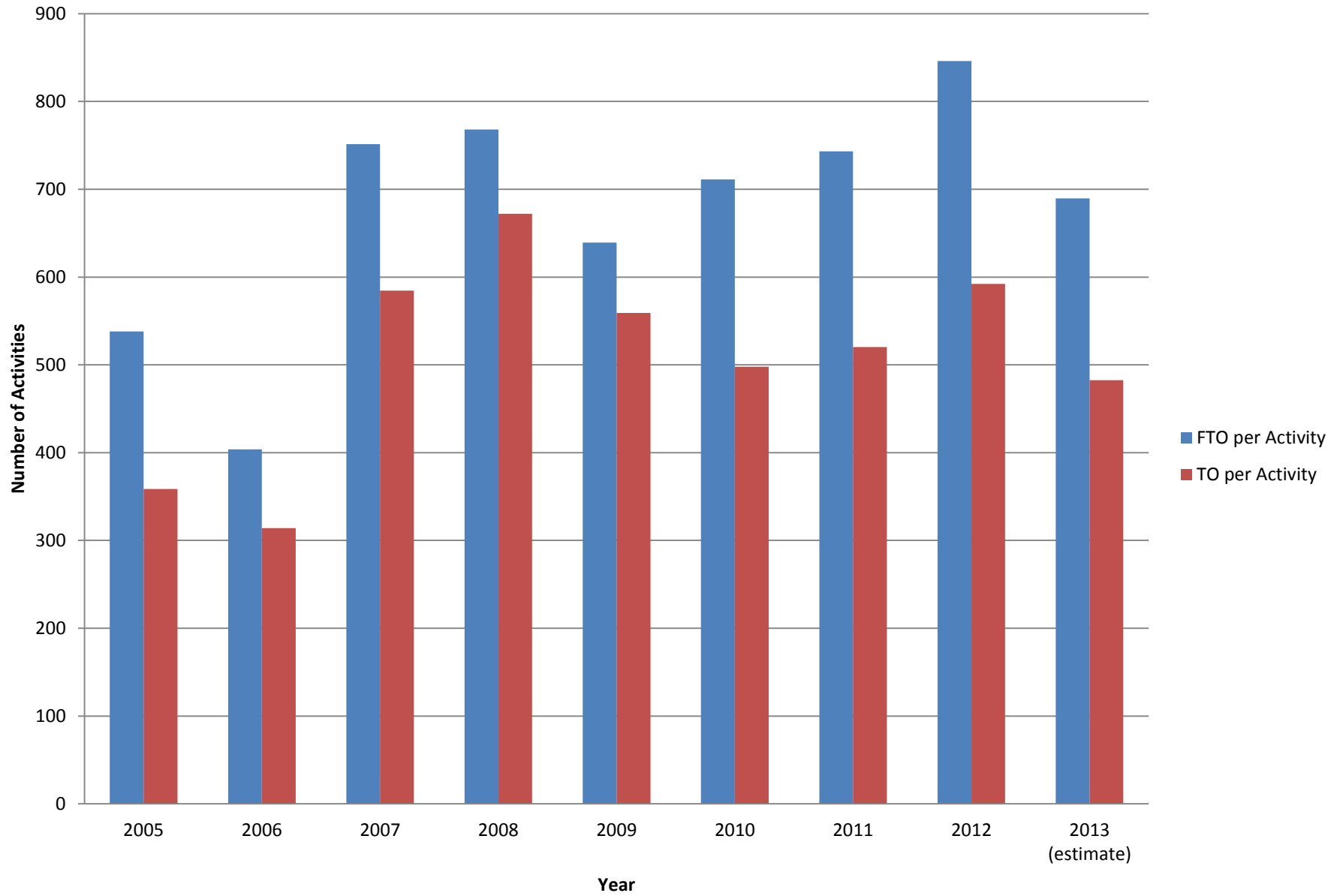


All Activity per Year

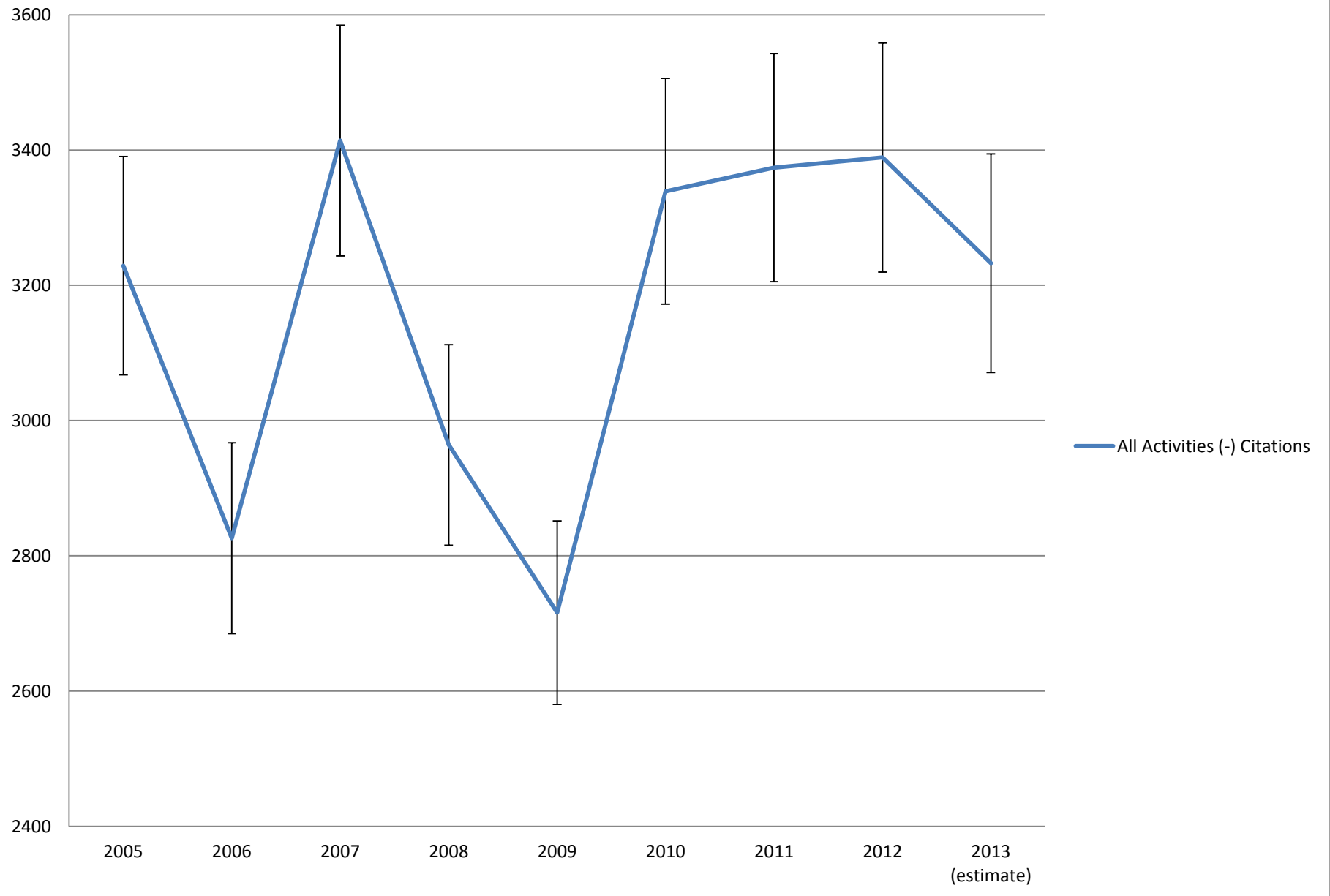




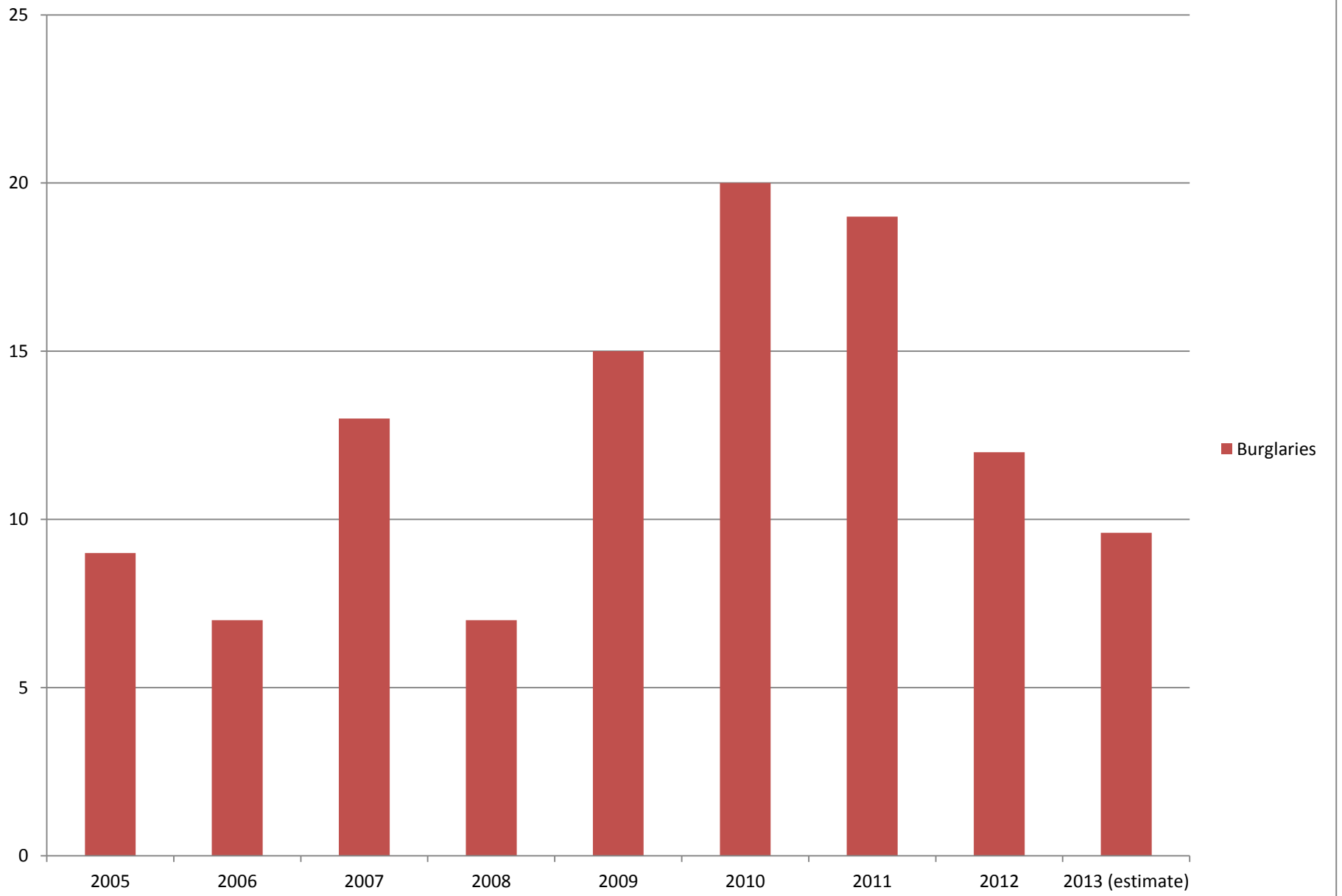
Activities per Officer



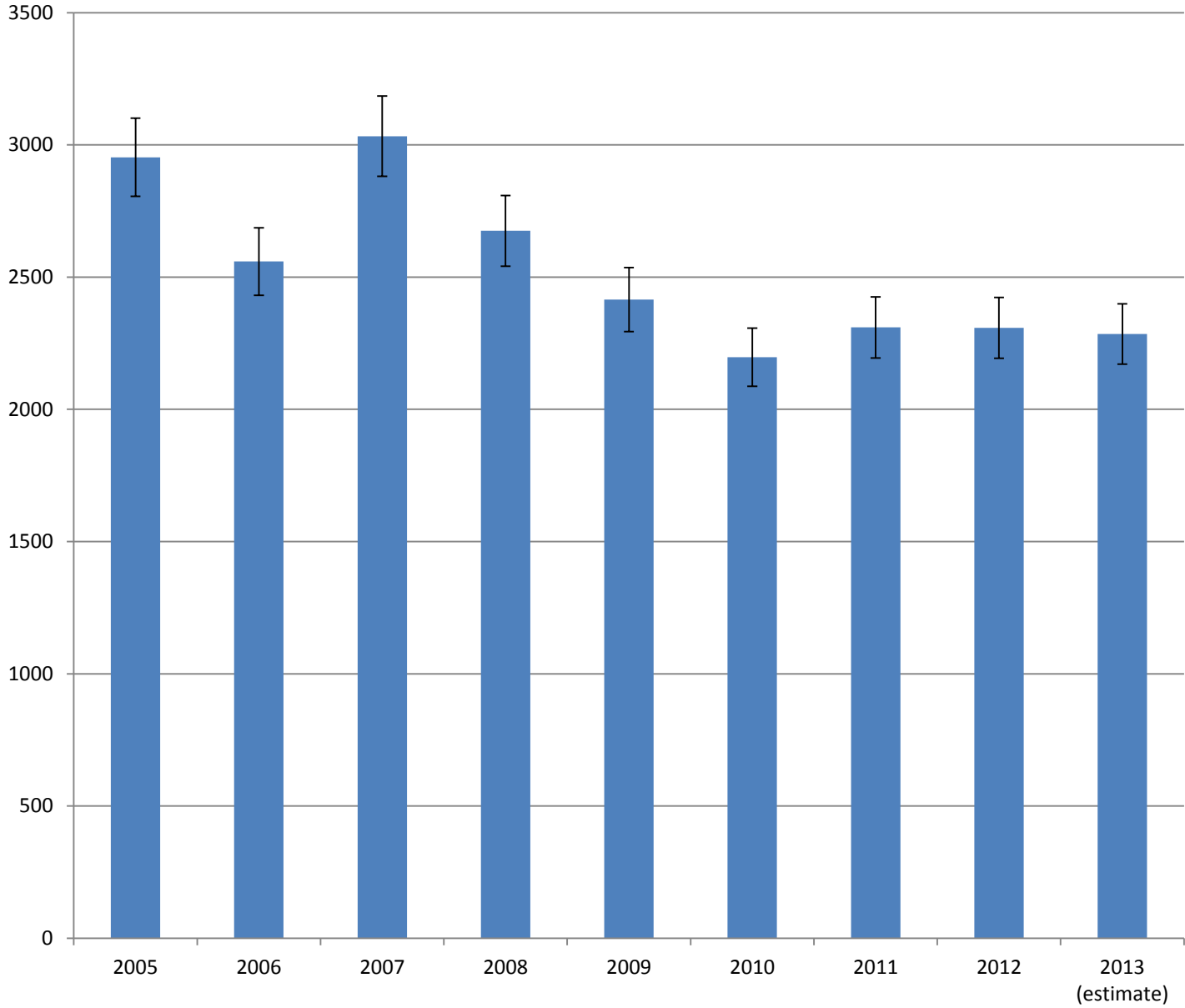
All Activities (-) Citations



Burglaries

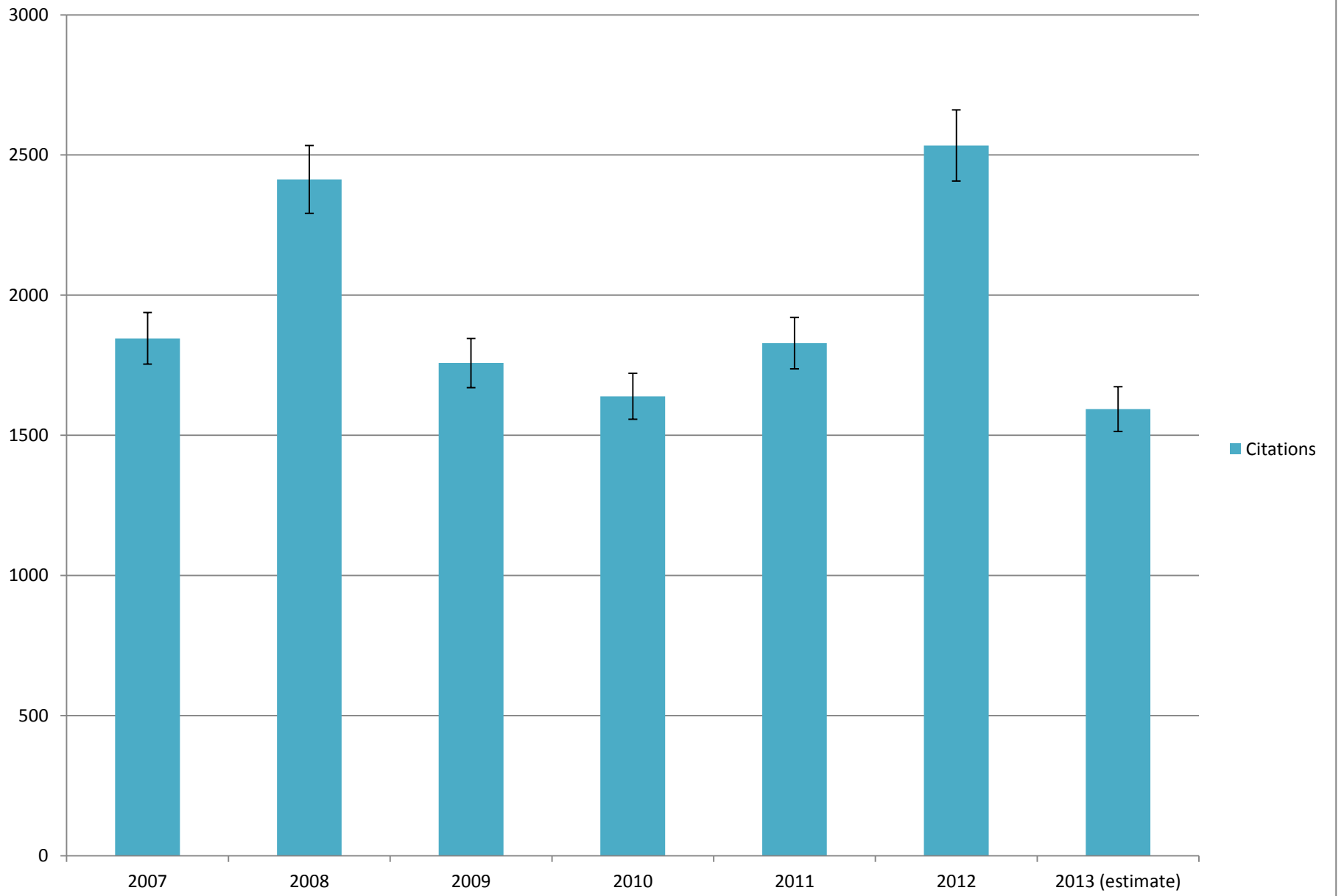


Non crime related incidents

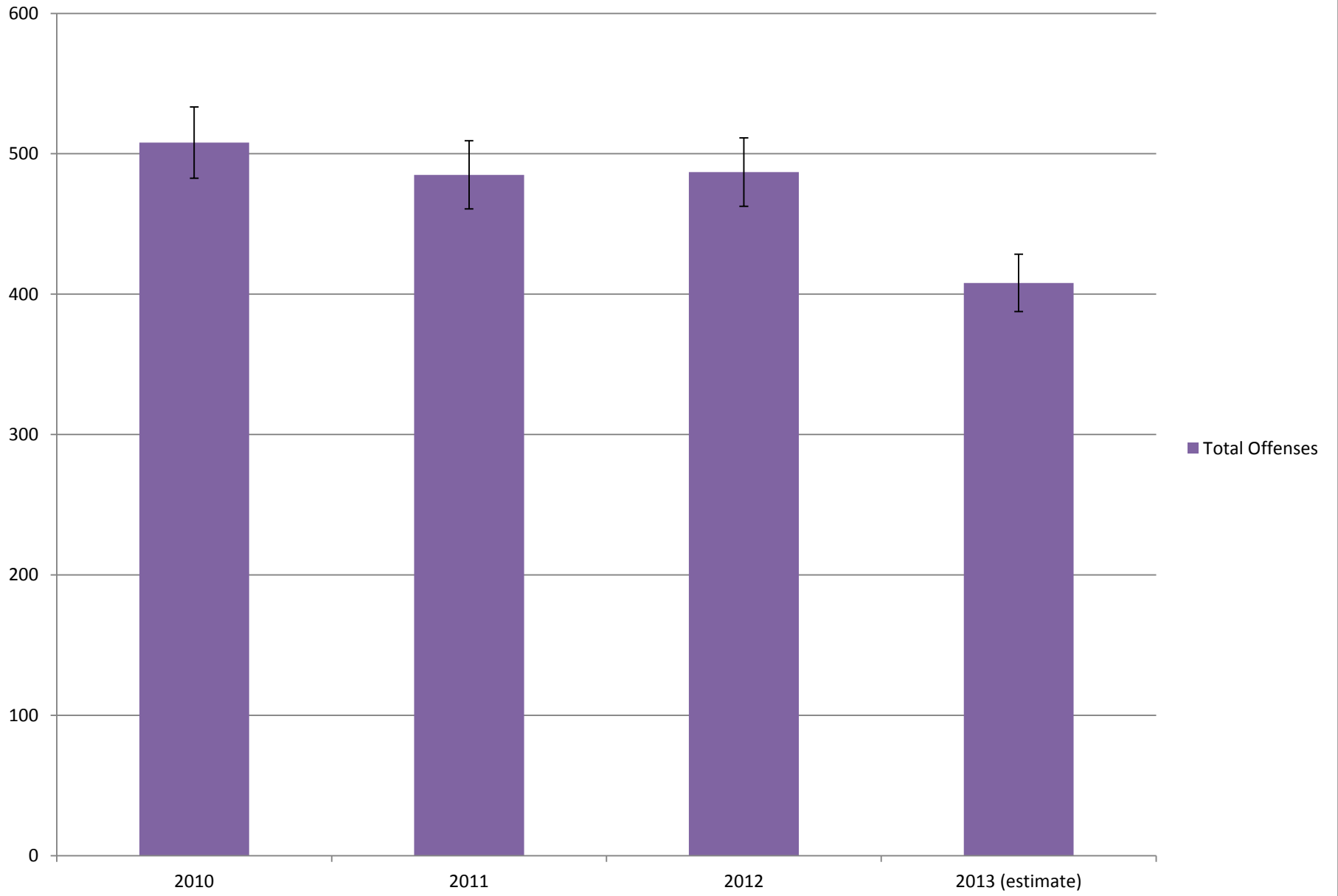


■ Non crime related incidents

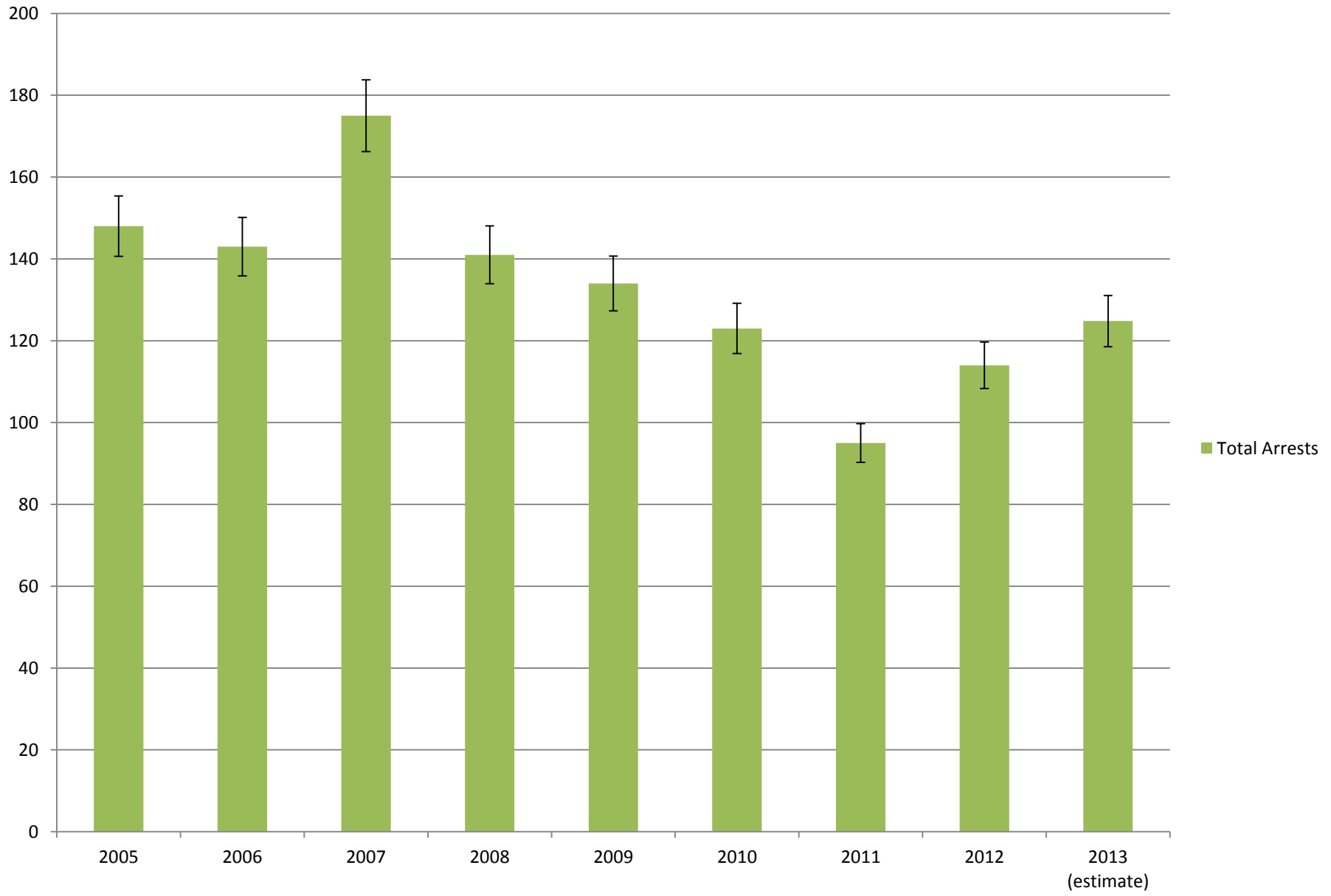
Citations



Total Offenses



Total Arrests



Crime related incidents

